



# Renovation of shower

for caravans, motorhomes and campers

## Practice Tips

# Renovation of shower trays in motorhomes and caravans

## The Background:

There are a few steps to follow when repairing shower trays in motorhomes or caravans.

These instructions guide you step-by-step through the individual points. In our specially compiled set, the components are matched to each other in exactly the right quantity. From the paint and epoxy resin to the laminating roller or mixing cup with stirring rods - everything has been thought of so that you can get started straight away.

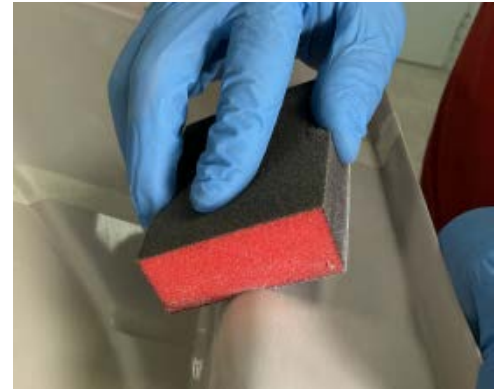
Our set is available in almost all RAL colours, so there are no limits to your creativity.



## The Preparations:

In order to achieve the best possible adhesion to existing substrates, these should be pre-treated accordingly. First sand the tray with a sanding sponge. The sanding dust can be removed with compressed air or a Hoover.

Then the mould is degreased with acetone (HP-AC). Before laminating can begin, all components of the solvent must have evaporated.



## The Priming:

Mix the primer HP-UC-9003 according to the data sheet. Then it can be applied thinly with a laminating roller. The primer can be overlaminated after 24 hours at the earliest (at 20°C) or after 3 days at the latest (at 20°C).

► Details on mixing can be found in the data sheet



## The laminating process:

At the start of the laminating work, some mixed HP-E45KL laminating resin is first applied to part of the surface.

The glass fibre fabric is laminated into the laminating resin wet-on-wet. It is essential to ensure that there are no air bubbles under the laminate. Sufficiently saturated material will become translucent after a short time. Ideally, 2 - 3 layers of glass fibre should be used.

► detailed information on laminating can be found in our 'Practical tips for hand laminating'.



In the case of narrow edges and small corners, the laminating resin can be dabbed on very well with the aid of the enclosed brush, thus soaking the fabric.



To achieve a crease-free laminate, the glass fabric is cut lengthwise in the corners of the tray and then laid on top of each other with an overlap. Then carefully saturate the glass fabric with the laminating resin.



As long as the laminate is dry but still slightly tacky, the HP-PUR top coat can be applied.

If a time of 24 hours (at 20°C) has been exceeded, the laminate must first be sanded, freed from dust and cleaned with acetone!

The HP-PUR topcoat is available in almost all RAL colours!



## The curing process:

This is significantly influenced by the ambient temperature. We recommend a temperature of 20°C at 60-70% humidity for the working areas.



## All the necessary materials are included in this set:

### Repair kit for the shower tray of the caravan/motorhome

Article: HP-KS-DW

The complete set consists of the following products:

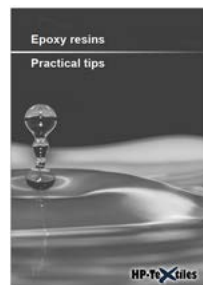
- 1 x HP-UC-9003-0.375 Primer white 375ml
- 1 x HP-PUR-0.625 Topcoat 625ml according to RAL
- 1 x HP-E45KL-800 Epoxy system HP-E45KL 800g
- 3m<sup>2</sup> HP-T100EF Glass filament fabric 104g/m<sup>2</sup>
- 3 x HP-L301 Paint tray 15x32cm 300ml
- 1 x HP-AC-1 Acetone 1 ltr.
- 3 x HP-L1015 Velour roller 10cm
- 2 x HP-L1034 Varnishing roller 10cm
- 1 x HP-L1030 Clip 6mm
- 10 x HP-L1097 Nitrile gloves, size: XL
- 1 x HP-L1054 Scissors 'OPTIMA' stainless
- 6 x HP-L1064 Mixing cup PP round 500ml
- 10 x HP-L1061 Stirring spatula/ length:150mm
- 1 x HP-SS-K100 Sanding sponge with fine grain
- 2 x HP-L1102 Flat brush natural bristles 25mm



The HP-PUR topcoat is available in almost all RAL colours!



Datenblatt HP-PUR



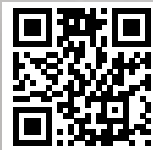
Detailed information on mixing the resin systems and laminating can be found in the respective data sheets and our practical tips.



**Our business areas:**



Composite Materials



Otto-Hahn-Str. 22  
48480 Schapen  
Germany

Phone: +49 (0) 5905 945 98 70  
Fax: +49 (0) 5905 945 98 74

[info@hp-textiles.com](mailto:info@hp-textiles.com)  
[www.hp-textiles.com](http://www.hp-textiles.com)